

COM FLOW

VALVES

NEW!
SDV70

Sectional Valves



70gpm (265lpm)

3500psi (241bar)

SAE Porting

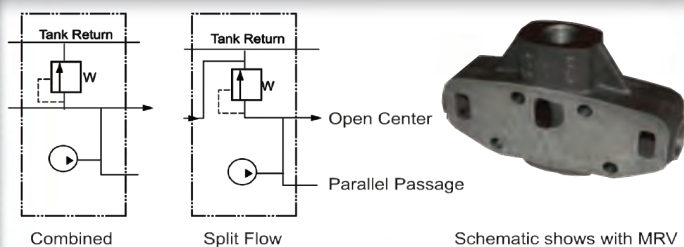
Completely interchangeable
with Parker VA35 & VG35

Series & Parallel circuits
available

Hi-Boy & Low-Boy sections
for added AUX options

Replacement of existing
parts, or new high-flow
applications

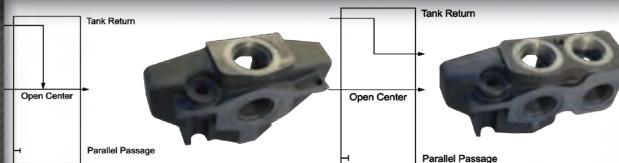
INLET & OUTLET SECTION OPTIONS



Mid-section inlets. One valve bank operates like two.



Adjustable inlet relief. Or no relief plug option.



Standard or power beyond outlets.

WORKING SECTION OPTIONS



Anti cavitation
valve for A&B ports

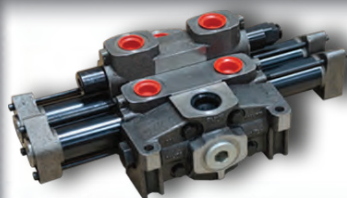


Adj relief for
A&B ports

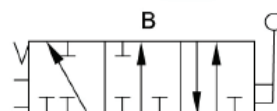


Adj relief with
anti-cav

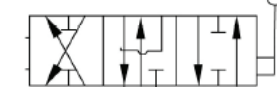
Auxillary porting for Hi-Boy sections



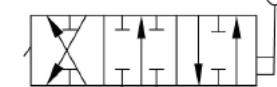
Hi-Boy sections
allow AUX port
valving, or Low-Boy
sections are without.



Single acting



Open centre



Closed centre



4th position float

All standard
spool options to
suit most
applications



ADDITIONAL OPTIONS



Double acting
solenoid operation
available in both 12v
& 24v DC.



Standard and
special Hi-Boy
handles for
manual control.
Hi-Boy handle
allows access to
AUX valving.



Hydraulic and
pneumatic pilot
available.

3 position detent
available in multiple
styles including auto
kickout

